

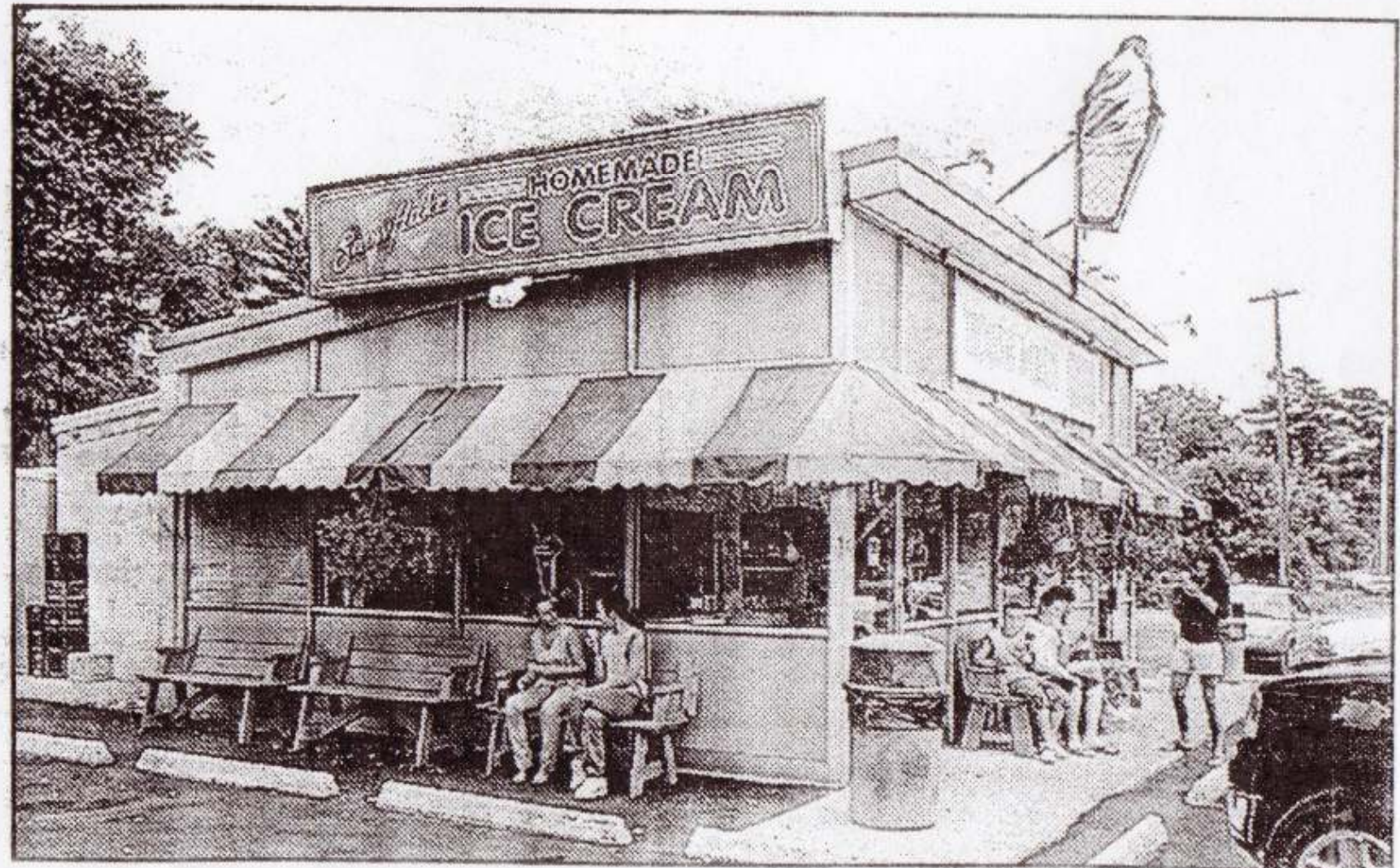
SMALL BITES / Cool aid

SNOWFLAKE

1148 W. Main St.
Riverhead
631-727-4394

Snowflake approaches legendary status. The soft-serve ice cream is everything you remember and more. In season, the fruit flavors are peerless: peach, black raspberry, strawberry. Or try classic French vanilla, and very minty mint chocolate chip. There's a flavor of the week. It could be cotton candy, baseball nut, cannoli.

— PETER M. GIANOTTI



NEWSDAY PHOTO / KEN SPENCER

Snowflake's soft-serve ice cream is the stuff of legends.